



Product 521620



521620 Active holder with cig-plug Adjustable holder with Micro-USB connector. Fits for devices with and without skin with the following dimensions: Width: 62-77 mm, Thickness: 6-10 mm. 2,1A charger. 12/24V. With tilt swivel.

Keep your phone in a holder when on the road and you will always have it within easy sight and reach. Safe, comfortable and convenient! The active holder charges your phone when it is placed in the holder. If you have a car with USB interface, you can disconnect the cig-plug from the holder's cable in order to get a USB-cable to connect directly to the USB connector in your vehicle.

The adjustable holder fits for devices with and without skin with the following dimensions: Width: 62-77 mm, Thickness: 6-10 mm. Adjustable holders come in various sizes. Measure your device and compare with the holder specifications in order to make sure you have chosen the correct product (if you are using a skin: measure the device with the skin in place).

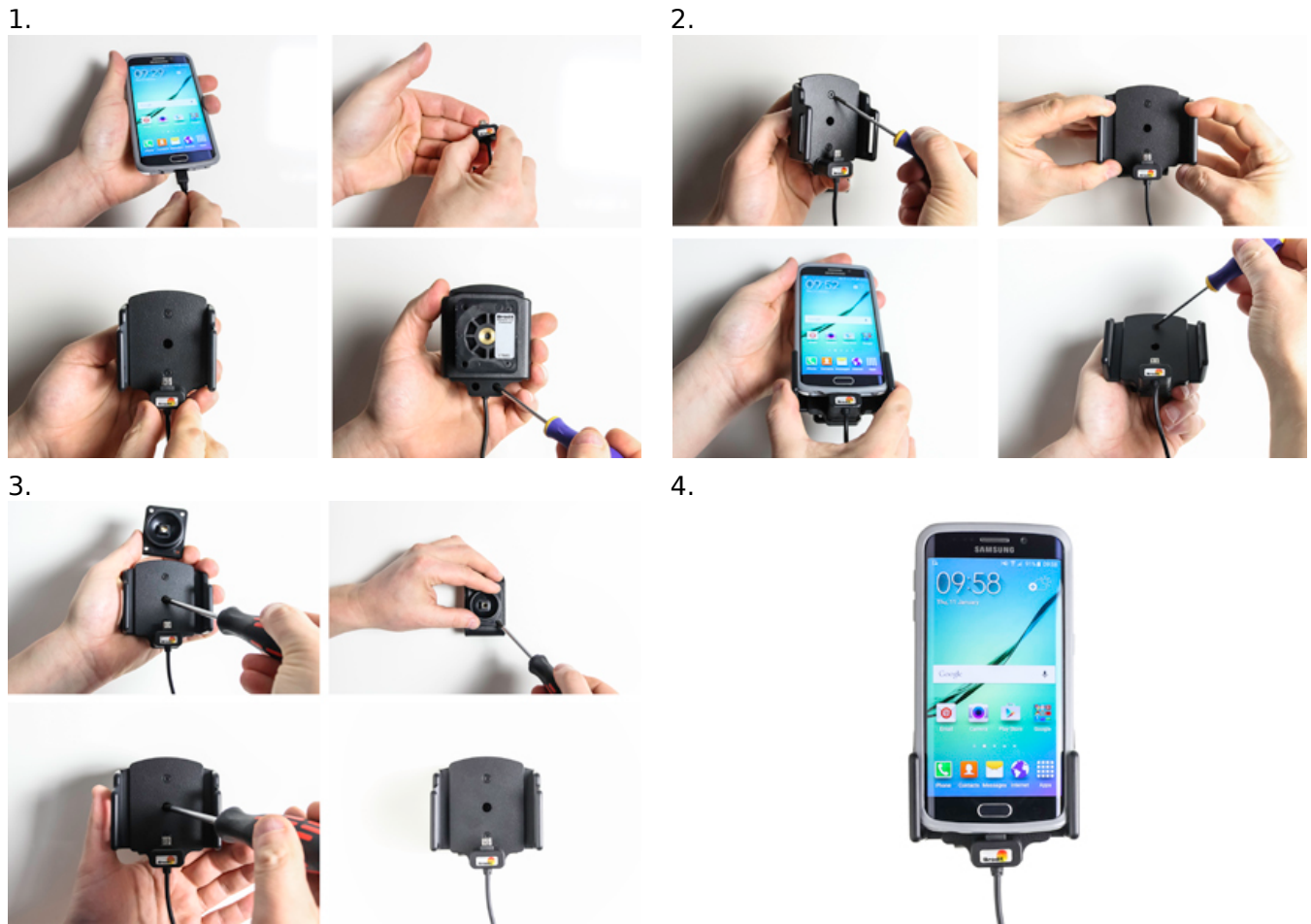
Before using the holder you need to confirm the charging cable is turned the right way (you can rotate it) and also set the holder's width so it suits your device, then your phone is held firmly in place in an upright position for maximum cellular reception. The holder has a neat and discreet design which blends well with the vehicle's interior.

The holder is made of black ABS plastic. It is easy to put the device into the holder, and just as easy to take it with you when leaving the vehicle. The holder is equipped with a tilt swivel so you can adjust the angle of your device in order to avoid light reflection on the screen. You can tilt the holder 22° in each direction. Attach onto ProClip Mounting Platform.

This product supports Qualcomm QC 2.0 quick charge (provided the device supports Qualcomm QC 2.0 quick charge).

EAN: 7320285216204

INSTALLATION INSTRUCTIONS



Please read all of the instructions and look at the pictures before attaching the holder.

1. Use your phone to determine in what direction the charging connector should be placed in the holder. Place the charging connector into the locking block. Place the locking block onto its position on the front of the holder. Turn the holder around and screw the locking block into place using the enclosed screws.

2. To adjust the holder for your device: Loosen the screws on the front side of the holder, so the sides of the holders can be adjusted. Place the device in the holder and press the sides together so the device is firmly in place. Remove the device carefully. Tighten the screws on the front side of the holder.

3. To install the holder: Loosen the screw in the center of the holder so you can remove the tilt swivel attaching plate on the back. Place the attaching plate onto the desired position. Screw the attaching plate into place with the enclosed screws. Place the holder over the attaching plate so the screw fits in the hole in the tilt swivel. Screw a few turns on the screw, just so the thread starts to pull. Pull the holder toward you and hold it slightly tensed, in the same time tighten the screw so the holder is pulled toward the tilt swivel. Tighten the screw firm at first, then loosen it a bit so the holder is firmly in place, but still can be adjusted.

4. The holder is in place.
